



# Original User manual

## NESBO Weed brush UK 125

Registration of Use ..... 3

EC declaration of conformity ..... 5

General information ..... 6

Introduction ..... 8

Handling ..... 9

Settings..... 10

Daily use ..... 12

Maintenance ..... 16

Labelling ..... 17

Customer services and claims..... 18





## Registration of Use

GB

Nesbo a/s produces high quality machines for professional users.

The warranty period on our machines is 12 months from the date of purchase and covers compensation in the event of material and production faults.

Any parts that have suffered damage as a result of material and production faults will be replaced by Nesbo a/s at no charge.

Consequential damage and wearing parts will not be replaced.

### PLEASE NOTE!

To maintain warranty, the Dealer is obliged to fill in and return the "Registration for use" below to Nesbo a/s, not later than one month after delivery to the end user.

A condition for any processing of claims is that this "Registration for use" is submitted timely.

This can be done on our website [www.nesbo.dk](http://www.nesbo.dk)

or by completing and scanning/submitting the coupon below to:

Nesbo a/s  
Daniavej 31  
9550 Mariager  
Denmark  
[nesbo@nesbo.dk](mailto:nesbo@nesbo.dk)

### Registration for use:

Machine number	
Model	
Delivery date	
End user	
Address	
Dealer	



## EC declaration of conformity

**Manufacturer:** Nesbo a/s  
Daniavej 31, DK-9550 Mariager, Denmark  
Telefon: +45 9858 4400

hereby declares that

**machine:** Nesbo  
**machine no.:** \_\_\_\_\_  
**date:** \_\_\_\_\_

**is in conformity with the applicable requirements of:**

Order of 10 June 2013 implementing Directive 2006/42/EC of the European Parliament and of the Council as amended, as well as the EMC Directive 2004/108/EC as amended.

**Standards applied:**

DS/EN ISO 12100:2 011 Safety of machinery - General principles for design  
- Risk assessment and risk reduction.

**Signature:** Peter Thomsen  
Peter Thomsen  
Factory Manager

**Nesbo weed brush,  
type UK 125**

**Congratulations! You are now the proud owner of a Nesbo weed brush!**



**Before first use**

Please read the user manual carefully before you use the machine.

If you are in any doubt, contact the dealer.

**Also read the motor user manual which is attached to the machine.**

This user manual occasionally refers to the motor user manual which includes an illustrated spare parts list.

To repair or replace spare parts for the motor, contact the importer or dealer of the motor concerned.

Use only original Nesbo spare parts for your weed brush. Original Nesbo spare parts can be ordered from your dealer or direct from Nesbo a/s.

## Safety instructions

The following safety instructions are used in the user manual:



### **WARNING**

#### **Risk of personal injury/death**

A technical procedure or similar, which may be associated with a risk of personal – or even fatal – injury.



### **CAUTION**

#### **Damage to machinery or attachments**

A technical procedure or similar, which may be associated with a risk of damage to the machinery or attachments.



### **NOTE**

#### **Important information**

Refers to a very important technical procedure or similar.

Never allow:

- unauthorised persons or children to use the machine.
- the machine to be used without the installed safety shields.
- people to stand close to the machine while it is in use.
- the machine to be adjusted while the motor is running.

Always make sure:

- to check that nuts and bolts are tightened to check after 15 hours of operation and at regular intervals thereafter.
- that you are familiar with the operation of the weed brush.
- that children, assistants and others do not approach the machine during operation.
- to keep a firm hold on the operating handle immediately after starting the motor and regulating the gas/speed.

Nesbo weed brush type UK 125 is a hand-operated machine used to combat weeds between flagstones, along kerbs, asphalt edges and similar. The machine should only be used for its intended purpose.

If you intend to use the machine for any other purpose, you must contact Nesbo a/s first.

### **Assembly instructions**

UK 125 is supplied fully assembled.

The motor is filled with 0.6 litres of motor oil.



It is easier to push/pull and move the Nesbo weed brush over short distances when it is resting on the ground in the position where it will be operated.



**NOTE**

**Important information**

Exercise extreme care in situations where the machine needs to be lifted. When lifting the UK 125 manually, it should always be lifted by two adults.



**WARNING**

**Risk of personal injury/death**

Avoid all contact with the brushes when lifting the UK 125 manually.

**Crane lifting**

When lifting the UK 125 by crane, always lift the machine as follows:

- Attach the lifting device securely in the lifting eye at the front of the motor.



**WARNING**

**Risk of personal injury/death**

When lifting the UK 125 by crane, always maintain a safe distance of min. 2 m from the machine.

### Operating handle

Adjust the height of the operating handle by loosening the two finger grips on the side of the base of the handle and raising or lowering the handle, before retightening the two finger grips.

Push/pull the UK 125 back and forth slightly to assess whether the setting is correct.



### Adjusting brush pressure

Weight distribution over the wheel axle can be adjusted by sliding the axle bracket in the oblong mounting holes, thereby adjusting brush pressure. The user can also adjust brush pressure by lifting up or pressing down on the operating handle.

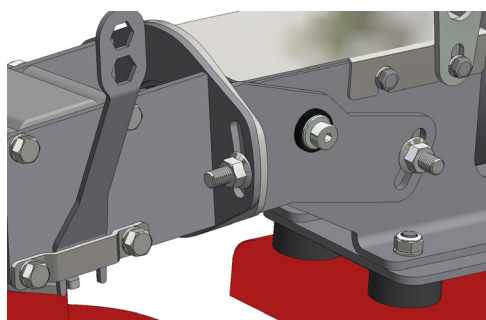
### Adjusting the brush cone

The brush cone can be adjusted from side to side and up and down. This ensures that the weeds are only thrown in the desired direction.

Adjust the brush cone up and down by loosening the flange nut on the side of the tilting bracket using the supplied key and tilting the brush cone up or down to the desired position. Retighten the flange nut.

Adjust the brush cone from side to side by loosening the flange nuts on the sides of the gear bracket using the supplied key and twisting the gear bracket with the brush cone to the desired position.

Retighten the flange nuts.



### Adjusting the motor

Refer to the motor user manual.



#### **WARNING**

##### **Risk of personal injury/death**

Never adjust the machine while the motor is running.

In the worst case, the brushes may hit the ground surface and the machine could run out of control.



#### **NOTE**

##### **Important information**

The motor speed is set via the throttle lever mounted on the operating panel.

## Starting the motor

In general you should refer to the motor user manual.

Lift the brushes clear of the ground before starting the motor according to the motor manufacturer's instructions.

It is important that the safety loop is pressed down fully, otherwise the motor will stop immediately.



### **WARNING**

#### **Risk of personal injury/death**

Never start the motor while the machine is in a closed room. Exhaust fumes may be fatal if inhaled.

## Emergency stop

The machine's emergency stop consists of a dead man's switch which stops the motor immediately when released.



### **NOTE**

#### **Important information**

Use both hands when operating the weed brush.



**WARNING**

**Risk of personal injury/death**

**When the motor is running**

Never approach rotating brushes.

Always go directly to the operating handle.



**WARNING**

**Risk of personal injury/death**

**Stop the motor before leaving the machine**

Never walk away from the machine while the motor is running.



**WARNING**

**Risk of personal injury/death**

Never touch rotating brushes.



**WARNING**

**Risk of personal injury/death**

NEVER block the safety lever so the motor continues to run when the handle is released.

**Lighting/visibility**

Only use the machine in daylight or in areas where there is plenty of light and good visibility.

**Operating terrain**

The terrain in which the UK 125 can be used may vary a lot, from flat areas to hilly areas.

When operating in areas with large height differences, be careful that the machine does not overturn.

**Fire risk**

Sparks may be caused when working on a hard surface such as flagstones. Please note that dry vegetation can be ignited by these sparks.

## Ejection

In order to limit the ejection of loose stones and other materials, the machine is equipped with two rubber shields. A rubber shield is fitted behind the machine bracket to protect the user against ejected material. This can be adjusted to the side to offer the best possible protection for the user.

An adjustable rubber shield is fitted at the front around the brush cone. This can be adjusted from the right hand side over the front, to the left side of the brush. The height and angle of the shield can be adjusted.

If the rubber shields become worn or destroyed, new shields can be purchased from the spare parts list.



### **WARNING**

#### **Risk of personal injury/death**

#### **Ejection**

Stones and other hard material that is ejected at high speed can hit and injure persons in the vicinity of the machine.

## Shutdown

If the motor cuts out or the weed sweeper fails, proceed as follows:

### Motor:

- Inspect the motor while referring to the motor user manual. If the motor will still not start, contact your dealer.

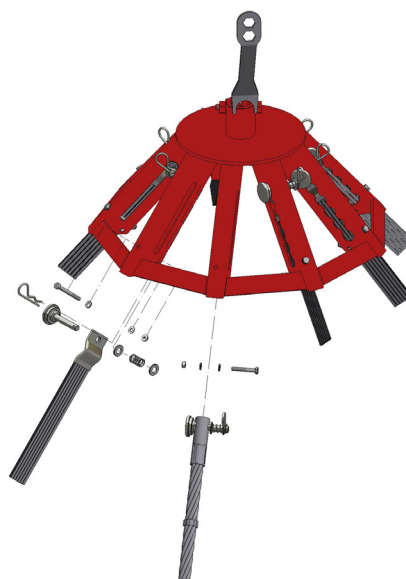
### Transmission:

- If the motor is not at fault, the angular gear or universal joint may have failed. Contact your dealer.

## Replacing brushes

All 9 brushes are changed in the same way:

- Remove the hairpin from the brush's locking pin. Take care that washers and springs do not shoot off.
- Remove the locking pin from the tube profile and pull the brush down and out of the brush cone.
- Insert a new brush in the brush cone.
- Insert the locking pin through the brush, through the bottom hole in the brush profile from the slot side, attach the washer and compression spring and secure these with the hairpin.
- Using the supplied key, tilt/lift the locking pin clear of the slot and move the brush to the top position in the brush profile.



The weed brush can operate with two different brush types: The standard flat steel brush and a wire brush. If you want to switch from the flat brush to the wire brush, unscrew the M6x60 machine bolt located at the base of the brush profile and tighten a new M6x40 machine bolt through the other Ø7 hole in the brush profile before inserting the brush.

At the end of the season, clean the weed brush and remove any weeds, soil and other debris. To prevent corrosion, lubricate all moving parts with oil (but not the motor).

The machine should be stored where there is low humidity and it is sheltered from rain and snow.

### Tightening

Nuts and bolts must be tightened after the first 5 hours and then at intervals of 15 operating hours.

### Lubrication

Lubricate the following parts after every 30 hours of operation:

- Wheels and universal joint
- Lubricate the 2 tilt joints used to adjust the brush position with oil after every 50 hours of operation and if the machine will not be used for long periods.

### Maintenance/Replacement

#### Steel brushes

When the steel brushes become worn, they must be replaced. New brushes can be ordered from the spare parts list. When installing new brushes, follow the instructions in "Replacing brushes" under "Daily use".



#### **WARNING**

##### **Risk of personal injury/death**

Before replacing the brushes, lift the spark plug cap clear of the spark plug so that the motor cannot start.

#### Other parts

When replacing the universal joint and angular gear, follow the "Installation instructions" and the accompanying drawings.



#### **WARNING**

##### **Risk of personal injury/death**

Before replacing the universal joint and angular gear, lift the spark plug cap clear of the spark plug so that the motor cannot start.

Contact your dealer if you are in any doubt about how to maintain the machine or how to replace parts.



The machine carries the following plates/labels. These are mandatory and must be clearly visible. New plates/labels can be ordered from the dealer.

### Warning label

A warning sign to warn against any contact with the steel brushes – either when rotating or at a standstill.

The warning label also shows that the operator must keep a firm grip on the handle during operation. The emergency stop device must be attached to the operator's clothes strap, belt or similar.

### Type plate

The machine is equipped with a type plate with an engraved machine number. The first two digits of the machine number indicate the year of manufacture. The machine number is unique to the particular machine, and Nesbo a/s will always be able to refer back to that machine if the number is quoted.

This plate also states the weight of the machine in kg and its power requirement in kW.



### CE labelling

The label indicates that the machine complies with the EC Machinery Directive, the year of manufacture and the manufacturer's website.

## Customer services and claims

GB

### Service

It is the dealer's responsibility to deliver the machine (and assemble if required), to start it on delivery or first use, and to instruct the operator about the use and maintenance of the machine (including tightening nuts and bolts).

The dealer is also obliged to make sure that the user manual and spare parts list is delivered to the customer and that the registration for use is completed correctly and sent to Nesbo a/s no later than 1 month after delivery to the user. (See page 3)

### Claims

The warranty period on Nesbo is 12 months from the purchase date, and covers any material or manufacturing defects. These parts will be replaced by Nesbo a/s free of charge. Consequential damage and wear and tear will not be replaced.

Any components which are not manufactured by Nesbo a/s are included under the terms of the warranty to the extent authorised by the supplier of the parts in question.

Nesbo a/s reserves the right to assign a claim of this kind to the relevant supplier and not to reach a decision until the relevant supplier has responded.

The following must be observed when working on a claim:

- report the claim to Nesbo before the repair is started
- agree a time period with Nesbo for qualified technicians to carry out the repair
- any labour costs will only be approved at a fixed net price.

If Nesbo a/s has not authorised repair work in advance, any invoice submitted for repair work will not be approved.

At Nesbo a/s' request, before the claim can finally be handled, any parts that were replaced must be sent carriage paid to the factory.

Nesbo a/s retains the exclusive right to determine the extent to which a part shall be replaced or repaired.

## Customer services and claims

GB

The warranty does not cover:

- normal wear and tear or damage which has resulted from inadequate maintenance.
- damage caused by collision.
- non-compliance with the product's technical specifications or if the product is used for a purpose other than that described in the ser manual.

If the product is altered or if non-original spare parts are used, all rights under the warranty will be rendered void.

The purchaser does not have the right to require that design changes on future models are implemented in a pre-existing machine.

### **In the event of a complaint**

Complaints must be registered directly with Nesbo a/s. Complete a complaint report, stating the machine type, production number and date of its delivery to the customer, and send it to us. This is done via the dealer login on our website [www.nesbo.dk](http://www.nesbo.dk).

If questions arise about claims on imported machines, we reserve the right to present the claim to the manufacturer before making any decision about whether the claim can be accepted.

Our machinery is subject to the EC Machinery Directive and quality assured within the European Union. We make every effort to comply with these requirements and do our utmost to supply high quality machinery.

Mariager, 01.06.2017  
Nesbo a/s



Copyright, Nesbo a/s ©  
Daniavej 31  
DK-9550 Mariager  
**[www.nesbo.dk](http://www.nesbo.dk)**